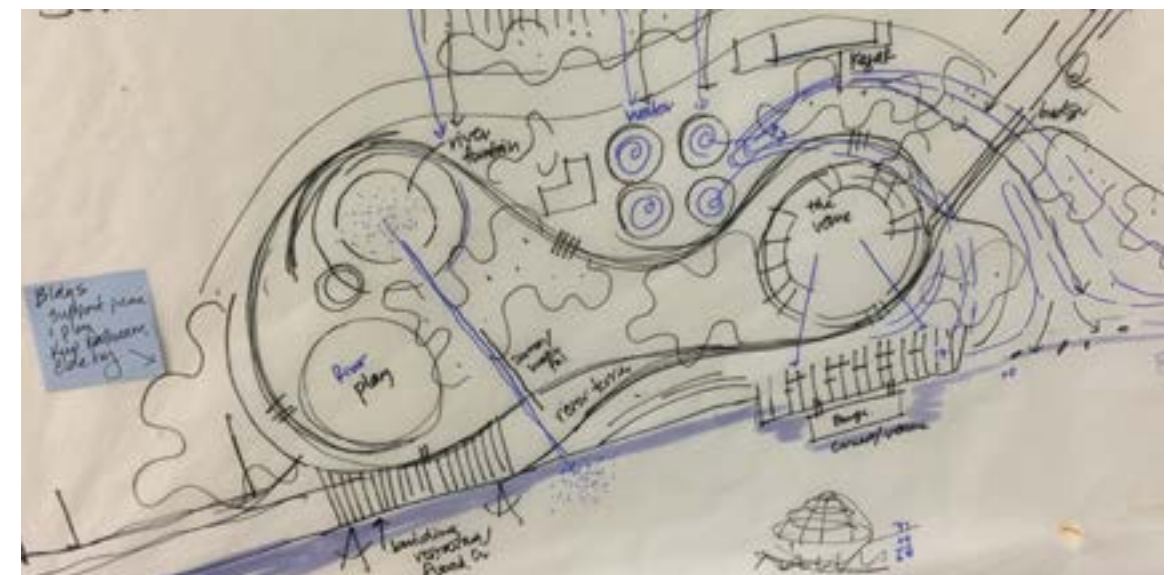
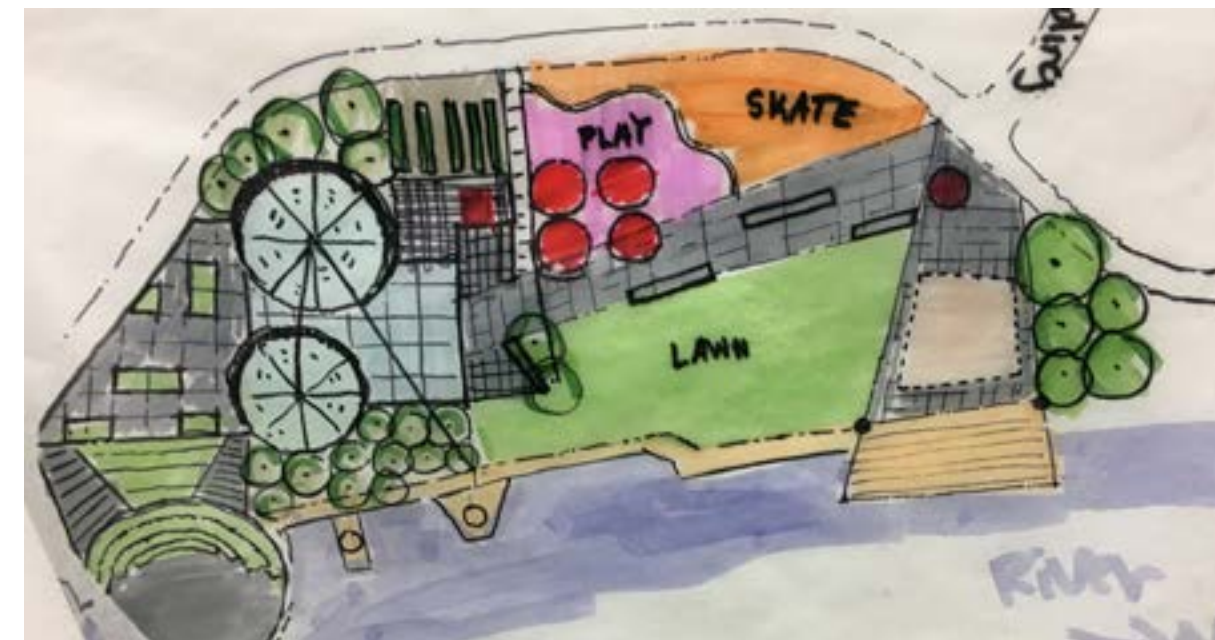
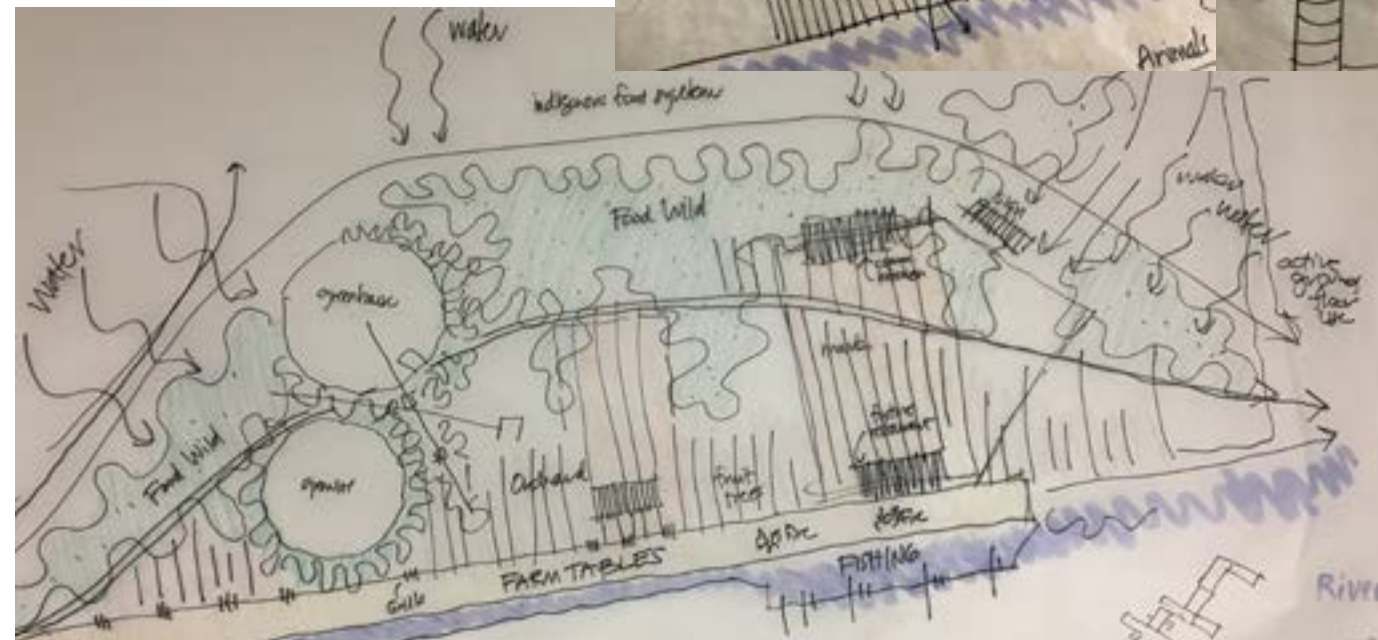
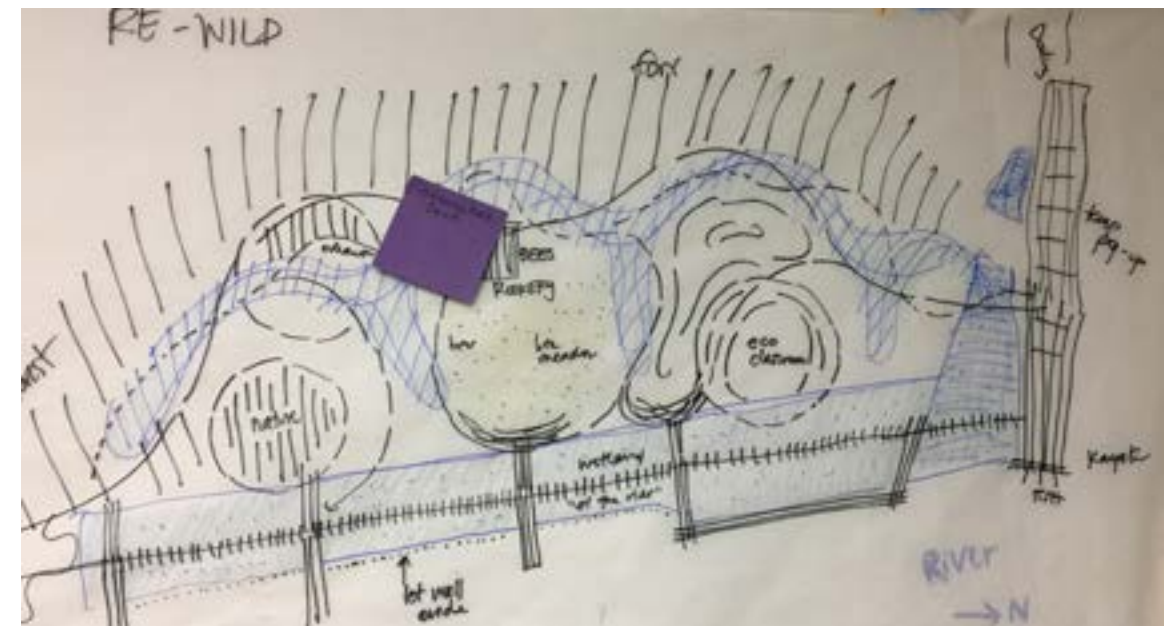
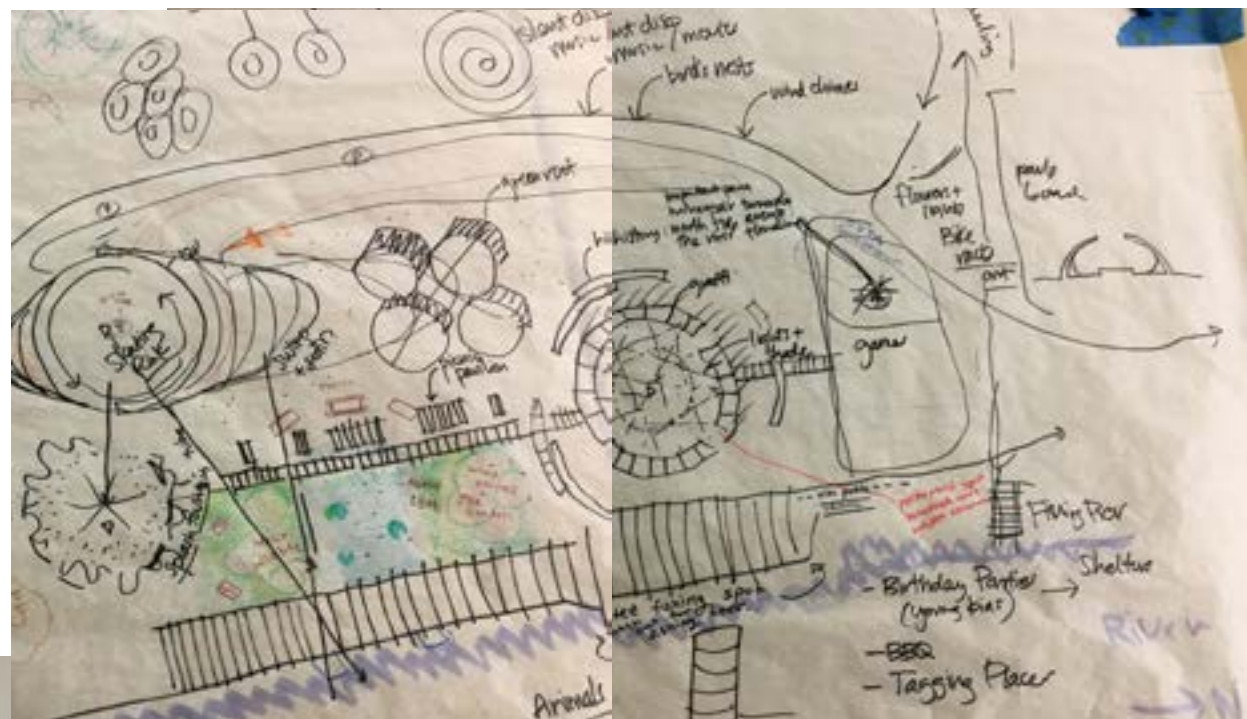
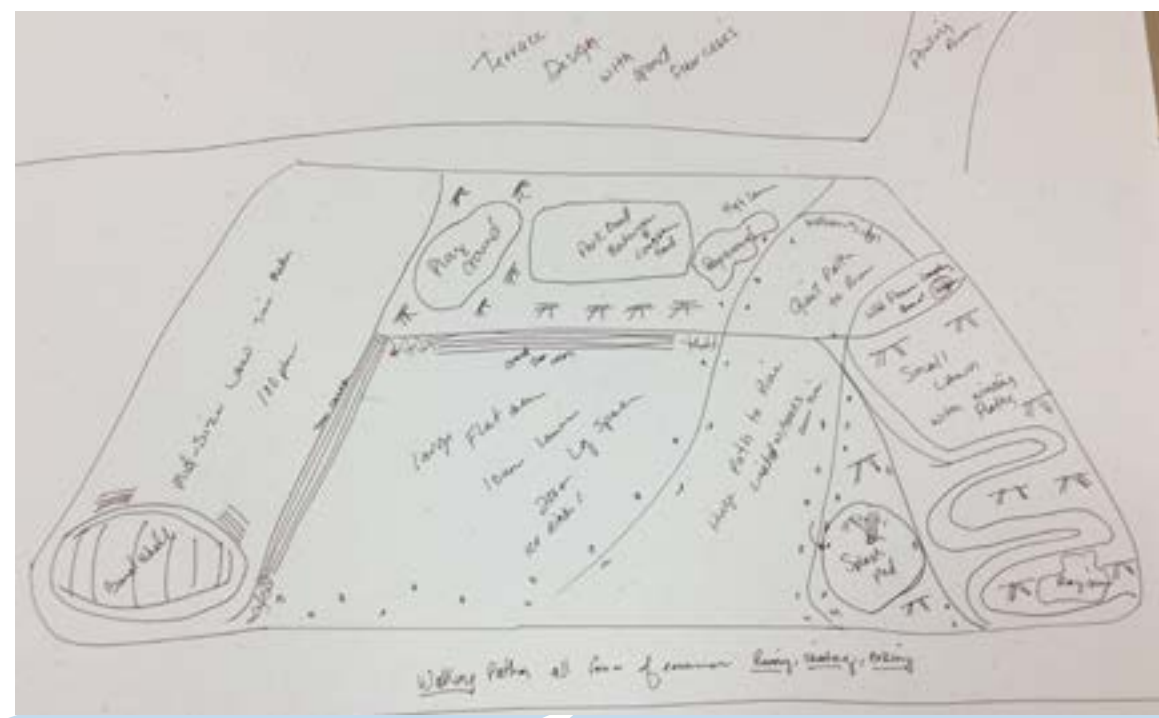
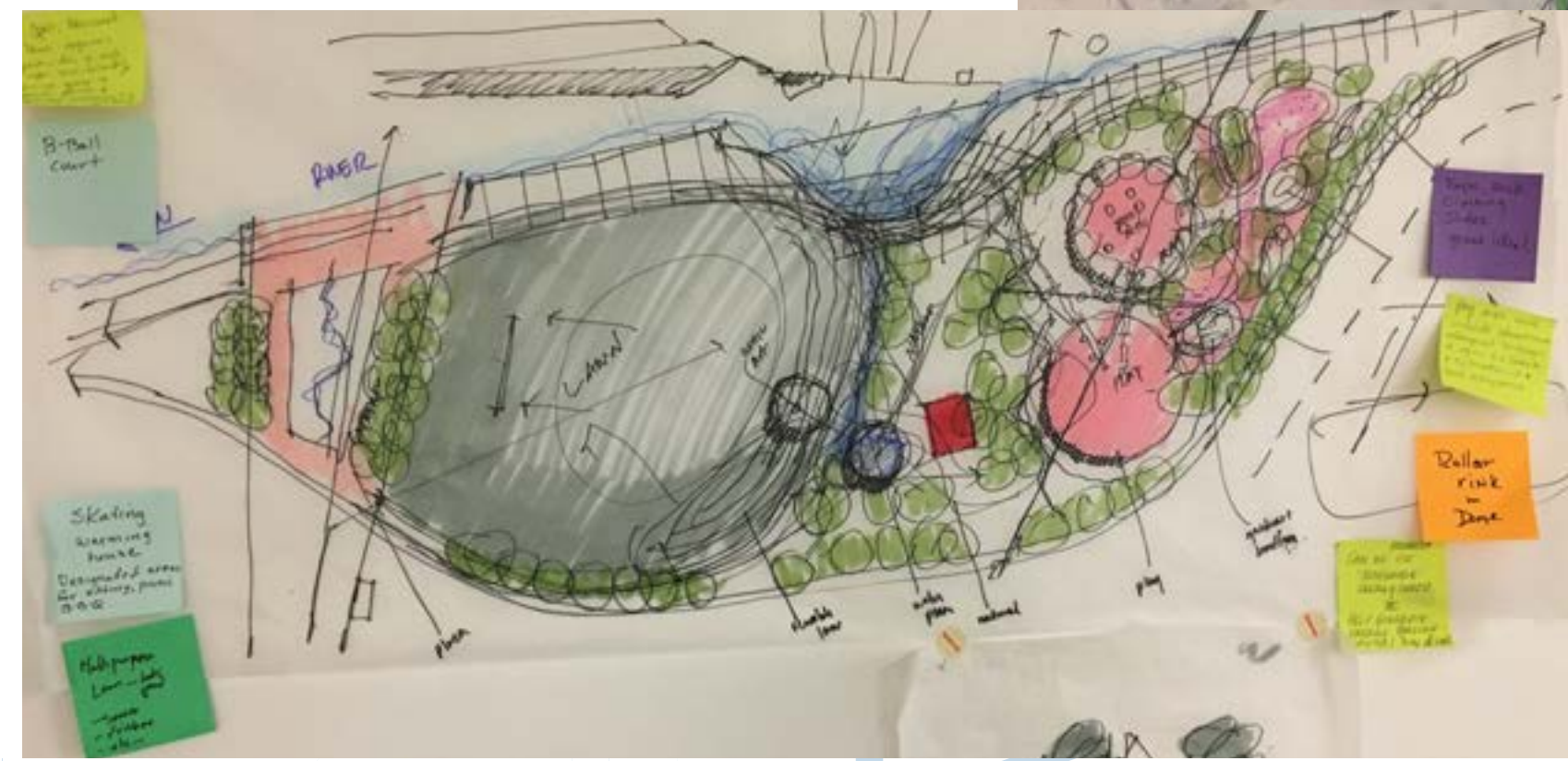


The design workshop was an interactive and informal way for community members to be able to draw and talk with the design and program team. Members of the City, developer, and Mississippi Watershed Management Organization were also invited to brainstorm and design with the team and the public. While the team generated over 70 sketches, the following images show a sampling of work of ideas.



# Upper Harbor Terminal

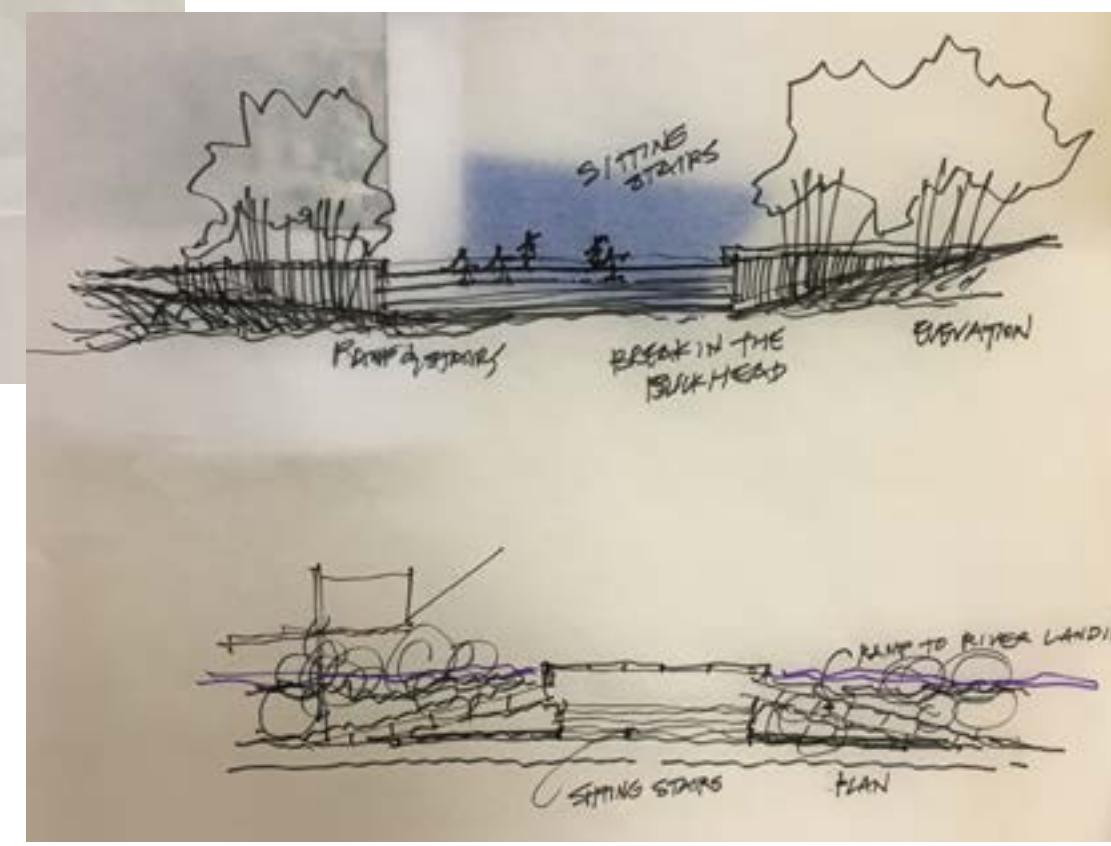
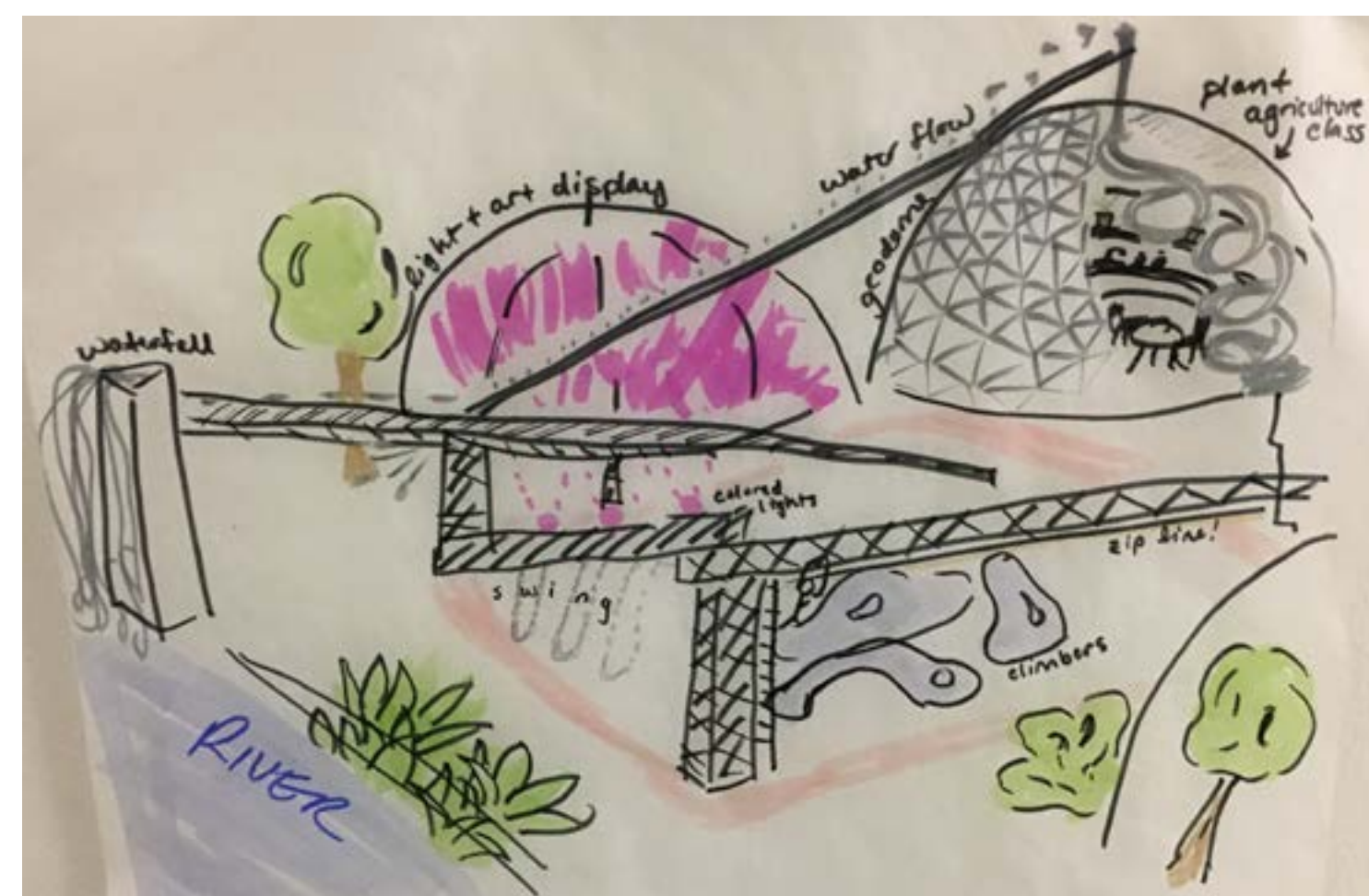
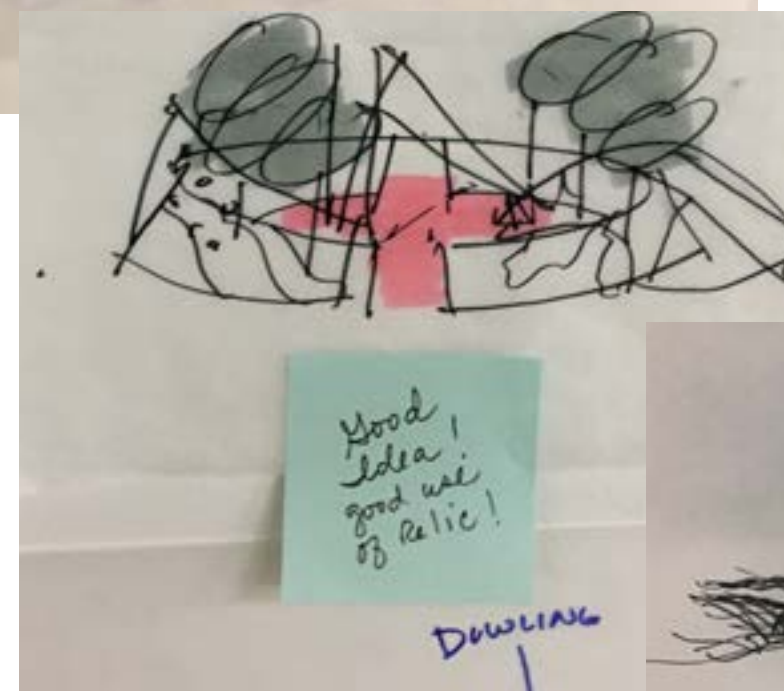
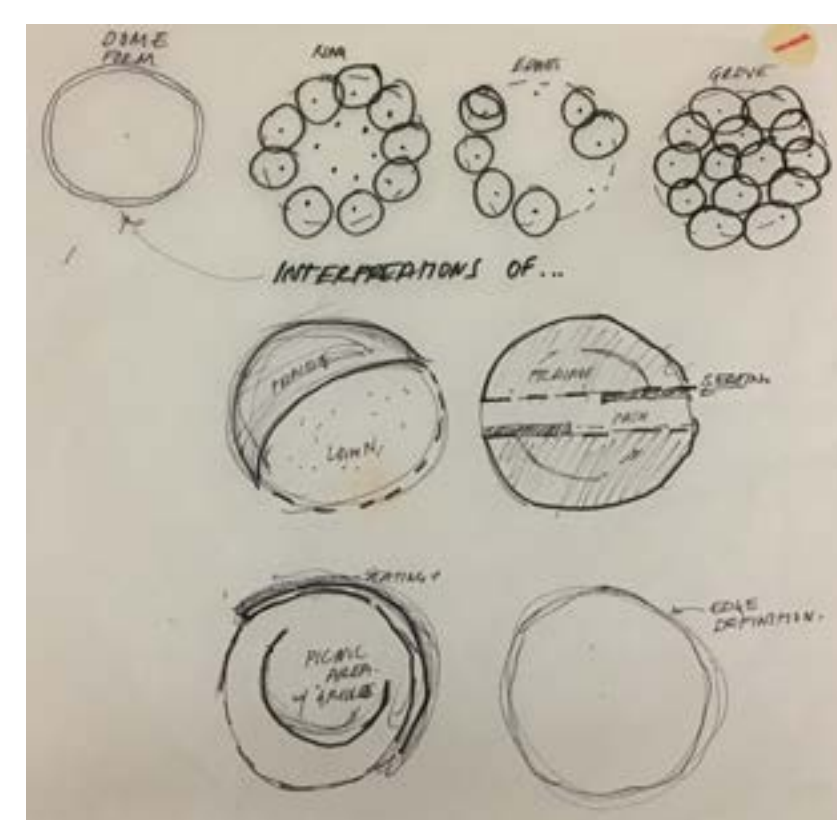




# Upper Harbor Terminal

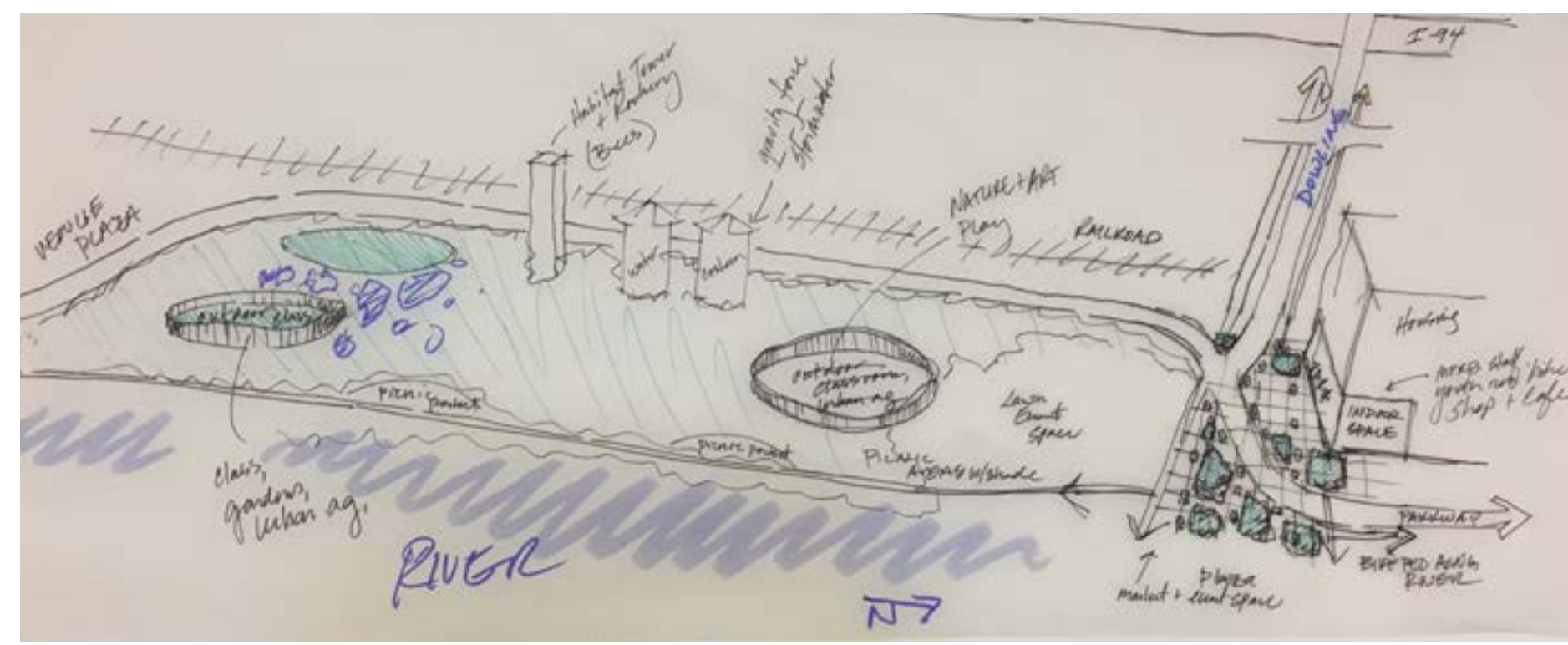
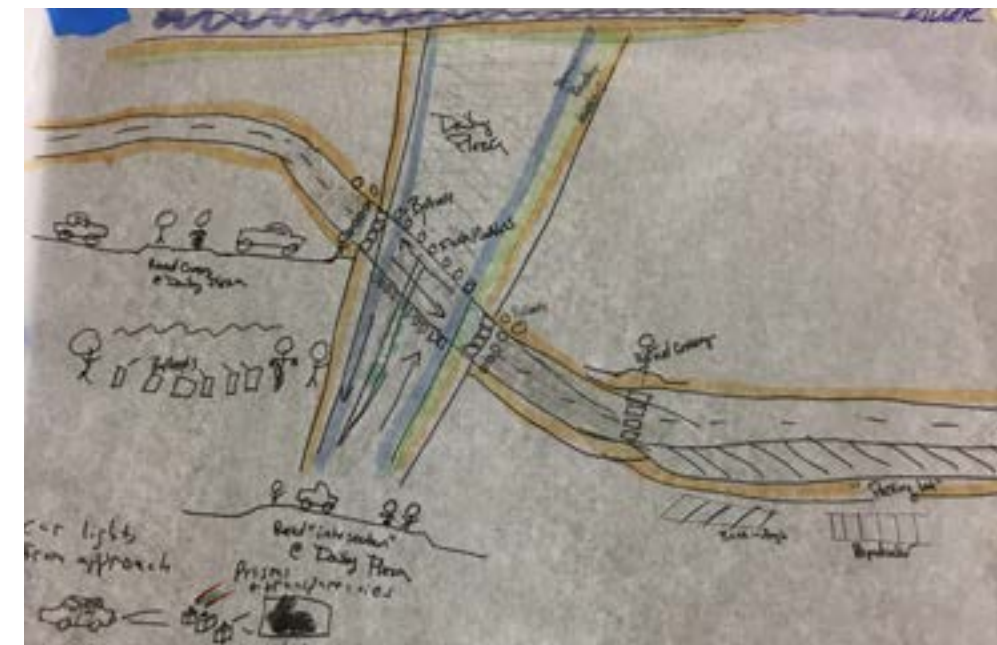
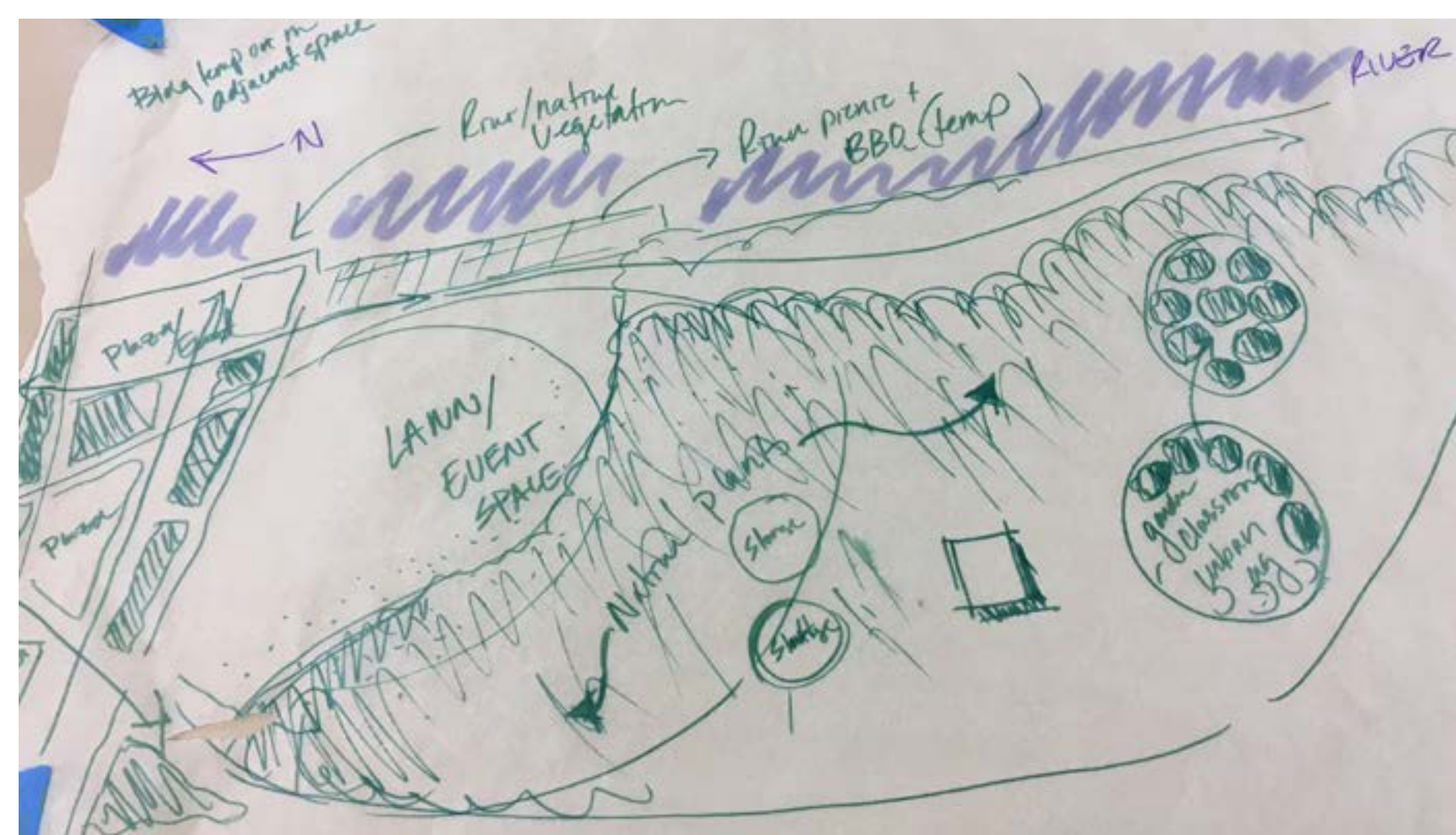






# Upper Harbor Terminal





# Upper Harbor Terminal